



Discovering the AWESOME talents of :)

Sam Sample

Congratulations!

you are a

SUPPORTER ANALYSER

**Well done on completing the questionnaire.
The answers you gave tell us that you are a SUPPORTER ANALYSER.**

As a Supporter Analyser you enjoy working with people you like and trust. You rely on facts to make decisions. You are friendly and make time for others. You are good with finances, numbers and a great organiser because you are thorough and think things through carefully. You have an eye for details. You are good fun to be with but sometimes a little too serious and afraid to try out new things. You are helpful person who dislikes arguments but will defend yourself when you have to.

We're all the same but different

Researchers found that whilst people are physically different we share personality styles and these were divided into four, Driver, Promoter, Supporter and Analyser.

So being a Supporter Analyser means you are a mix of these two styles and as you'll discover each has its own strengths.

Each personality is good at some things and not so good at others and one style is not better or worse than another.

We are not all the same and we each like different things. We have our own taste in music, clothes, books, games, foods and the career we'd like to do.

We also get along better with some styles than others. Often our friends are like us because we share the same personality and interests.

However you need to get along with people of all styles and be tolerant and respectful of others. Just because they like pizza and you like burgers doesn't make them better or worse than you.

Personality styles

Here's a look at the four main styles. You can be just the one style or a mix of two.



DRIVERS are Adventurers, energetic, competitive and determined. They like to lead, take action, get results and love a challenge. Winning is important.



PROMOTERS are Socialisers, outgoing and fun people. They are talkative, enthusiastic and motivating. They are great communicators who inspire others with their imagination.



SUPPORTERS are Helpers, kind, dependable, and practical. They are easy to get along with, great listeners, generous and they enjoy helping people.



ANALYSERS are Thinkers, great with facts and numbers. They are well-organised, pay attention to details, don't rush into things and are cautious and accurate.

JUST FOR FUN LET'S IMAGINE



If you were a Teenage Mutant Ninja Turtle you would be **Michelangelo**, he's the peace maker and always ready to help.



On The Simpsons show you are **Marge**, puts others ahead of herself and encourages the family when their down.



On Stars Wars you are like **Luke Skywalker**, loyal, patience, ready to help and fight for those less fortunate.



Now if you were at Hogwarts with Harry Potter, then the Sorting Hat would put you in **Hufflepuff** house "just and loyal, patient and true and unafraid to toil".



In Marvel comics you are **Spider Man**, laidback and supportive of people and causes important to him.

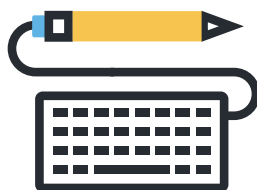
NOW YOU KNOW YOUR PERSONALITY STYLE, WHICH PERSONALITY STYLE BEST DESCRIBES YOUR

BEST FRIEND: _____

BEST FRIEND: _____

PARENT OR CARER:

BROTHER OR SISTER:



USING THIS REPORT

To use this report print and complete exercises by hand or download ADOBE Fill & Sign app.

There's a version for Tablets and another for iPads. Both are FREE from iTunes and Google Play. Click icon to go to the store.



Tablet



iPad

ABOUT YOU

Supporter Analysers are caring people who accept others for who they are. You are easy to talk to and a great listener. You'll help others even if you don't have the time. Your easygoing behaviour makes you a friendly, thoughtful person who has good relationships with people. You like it when people work together and get along with each other. You are patient and a wonderful team player. Your loyalty and dependability are your strengths.

You like to follow rules and do things in a logical way. You are cautious, and you don't like to be pressured. You won't rush into making a decision instead you like to check things out and think about it first. But if you say you'll do something, you do it. You will stick with something, as long as it works; in fact you continue doing it until you are an expert at it. You are curious and you tend to be proper, organised and creative. You can be a bit quiet but you have strong opinions that help you make decisions. You enjoy being alone where you can read and have time yourself or with your pets. You are something of an inventor. Your talent to think things through makes you great at solving problems. It also helps you to come up with interesting ideas.

You demand the best from yourself, and this can be tough on you because you want things to be just right. You enjoy being a specialist. As a child, your school report probably said 'polite and quiet, helpful and kind'.

WORDS THAT DESCRIBE YOU

- Patient
- Loyal
- Even tempered
- Considerate
- Kind
- Easy going
- Trusting
- Likeable
- Dependable
- Helpful
- Good listener
- Team player
- Accurate
- Sets high standards
- Cautious
- Organised
- Creative
- Do things right
- Careful



OF THESE WORDS, WHICH FOUR BEST DESCRIBES YOU?

1. _____

2. _____

3. _____

4. _____

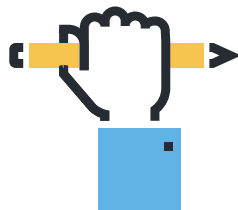
THINGS YOU LIKE AND ARE GOOD AT



Tick the ones you think are most like you

Things you like

- To work with people who get along
- To work on one thing at the time
- To finish what you start
- To have things stay the same
- To know what will happen next
- To be around people who appreciate you
- To do things you know you're good at
- To give practical ideas and suggestions



What you are good at

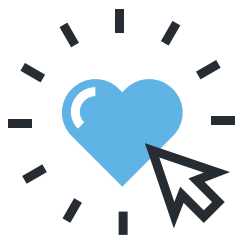
- Being honest
- Being calm
- Being loyal
- Enjoying time with friends
- Seeing an easier way of doing things
- Being reliable
- Being a team player
- Solving problems
- Organising projects or events
- Being dependable

**THINK ABOUT YOUR LAST REPORT,
WHAT WERE SOME OF THE GOOD
THINGS THE TEACHER SAID ABOUT
YOU?**

**WHAT SUGGESTIONS FOR
IMPROVEMENT DID YOUR TEACHER
MAKE?**

WHAT WE ADMIRE ABOUT YOU

You have strengths that other people recognise. Here are some of those that make you who you are and are valued by others.

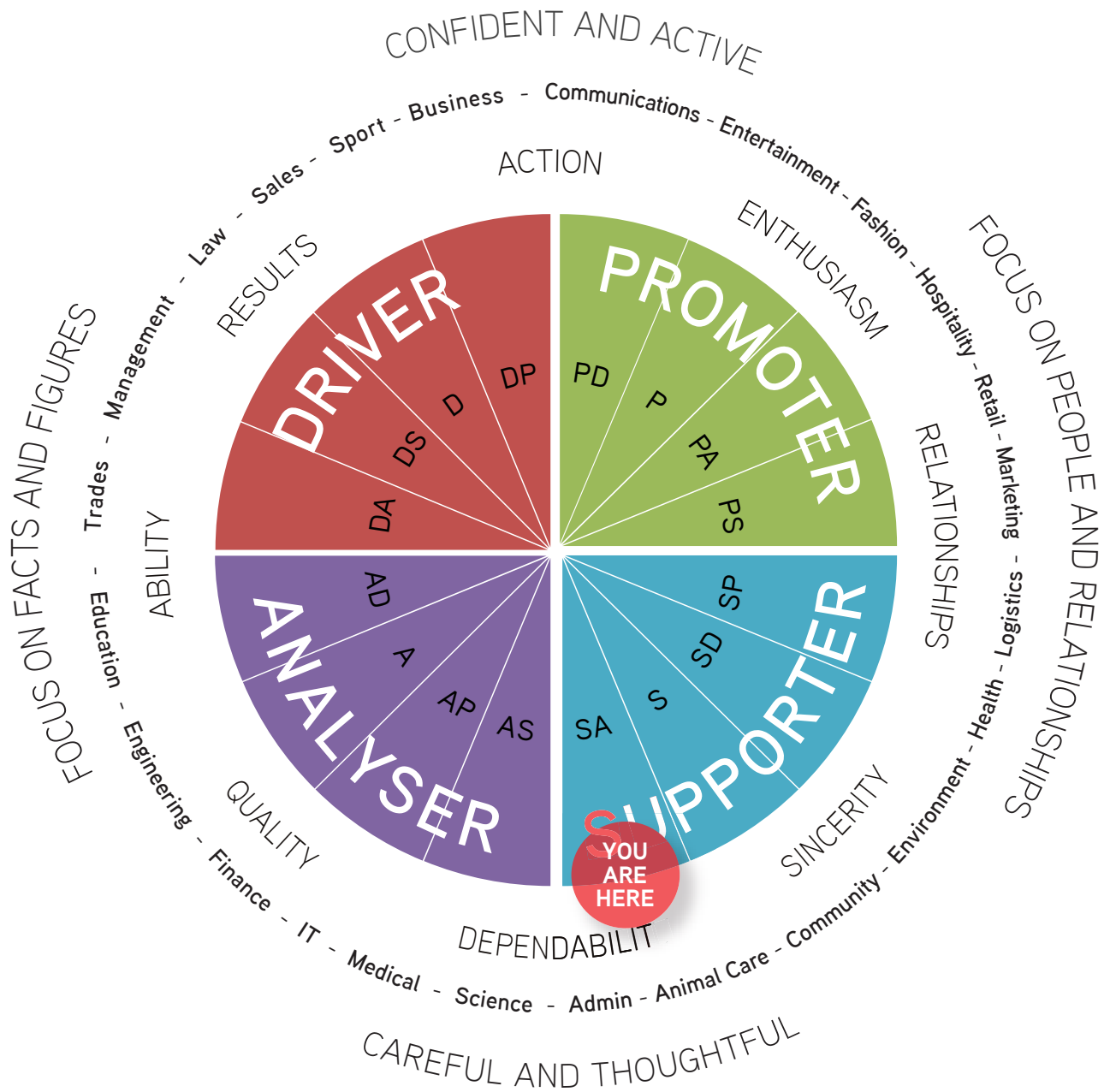


- You are a caring person
- You want to know what to expect
- You don't rush into decisions
- You go out of your way to get along with people
- You are a good listener
- You always follow through
- You are a trusting person
- You give people the benefit of the doubt
- You tend to be a quiet person
- You expect the very best
- You like things to be organised
- You do things in a logical way
- You enjoy spending time by yourself

OF THESE, WHICH DO YOU MOST LIKE ABOUT YOURSELF:

- _____
- _____
- _____
- _____

YOUR CAREER PERSONALITY MAP



Understanding your Career Personality Map

The Map is divided into the four MyCareerMatch styles, DRIVER, PROMOTER, SUPPORTER, ANALYSER and combinations of each style e.g. DA =Driver Analyser, DP = Driver Promoter, DS =Driver Supporter. Your style is marked as 'YOU ARE HERE'.

The outer circle shows 'what you focus on' Analysers and Drivers focus on facts; Promoters and Supporters focus on people. Drivers and Promoters are confident and active, whilst Analysers and Supporters are careful and thoughtful. The middle circle are examples of some of the careers that match each personality style.

The inner circle represents 'what's important to you' – for Drivers its actions and results, for Promoters its enthusiasm and relationships, for Supporters its dependability and sincerity and for Analysers its quality and ability.

CHOOSE A CAREER THAT FITS YOU

You've probably been asked what you want to be when you grow up.

Some of you will have an idea of the career you want and others won't. And that's OK you have time to make up your mind and many people even after graduating still don't know what they want be.

During your working life you will have many different jobs. Some jobs you will like and others you won't. Finding the right one is a challenge.

So how will you know what the right one is, when many of the jobs around today may disappear by the time you're ready for work and there will be new jobs that we don't yet know what they will be.

Here's what we do know. Future jobs will require people to have technology skills and a qualification. More jobs will need STEM subjects (Science, Technology, Engineering and Maths) and 8 out of 10 jobs will require a Certificate III or higher and 30% of those will require a university degree. Your chances of getting a job without a qualification will be difficult.



**IF YOU COULD BE ANYTHING,
WHAT WOULD YOU LIKE TO BE?**



1ST CHOICE: _____

2ND CHOICE: _____

WE RECOMMEND THESE CAREERS FOR YOU

The careers that we've suggested might not be the ones you've thought of, however we've recommended these because people with your personality are a good match for these jobs.

Community Services



Community services is working with people of different ages, care and support. It includes counselling and therapy and helping people with personal development and life decisions.

Careers include: Welfare Rights | Youth Worker | Community Counsellor | Family Mediator | Librarian | Legal Services | Administrative Assistant

Administration



Administration is about managing office systems, information and records, communicating and helping people, planning and organising, employment, health & safety.

Careers include: Accountant | Civil Servant | Administrative Assistant | Human Resources | Para legal | Receptionist | Personal Assistant

Healthcare



Healthcare is about care, support and rehabilitation of people including diagnosing and treating, health promotion and advice, medical research and testing and working with healthcare professionals.

Careers include: Dental Nurse | Dietician | Health & Safety Officer | Midwife | Nurse | Therapist | Psychologist | Emergency Care | Medicine

Environment



Environment is about making a difference to the planet and how we live. Whether you want to save the snow leopard, champion renew-able energy, or conserve earth's natural resources, green jobs would be ideal as you have a passion for making the world a better place to live in.

Careers Include: Air Quality Officer | Battery Storage Engineer | Climatologist | Ecologist | Marine Biologist | Solar Energy Engineer | Zoologist | Meteorologist | Oceanographer

Information Technology - IT



IT includes working with computer hardware and software, analysing and solving computer-related problems, digital media, the Internet and communications, gaming, animation, and designing websites.

Careers include: Software Developer | Web Developer | Data Analyst | Network Engineer | Game Developer | App Developer | IT Technician

THE AMAZING WORLD OF STEM CAREERS

Science
Technology
Engineering
Mathematics

Health

From hospitals and healthcare professionals caring for patients, to inventing new high tech life-saving equipment to pharmaceutical companies researching new medicines.



Energy & Environment

From inventing new technologies to reduce carbon emissions, to developing new energy sources such as wind, waves and sun, to protecting rare species of animals.



Entertainment

From the design of video games, to special effects for films, to sound engineering for the music industry.



Construction

From architecture and design, to civil engineering of everything from bridges, railways and roads, to homes and parks and constructing buildings to planning towns.



Aerospace & Transport

From making travel easier for people whether on the roads, rail or in the air, through to helping goods be transported around the world for trade and humanitarian relief.



Information & Technology

From the technology used in our mobile phones, to software designs which give us access to the internet, to managing international communications networks.



Sport & Fashion

From inventing new high performance sports equipment, to physiotherapy for athletes, from new textiles to computer aided design of new fashion ranges.



Food & Agriculture

From developing new high yielding plant varieties to feeding more people around the world, to cooking up new recipes for supermarkets, to farming the land.

CHOOSING MY SCHOOL SUBJECTS

Use this page to help decide which subjects to take in the future



Subjects I like doing now

Subjects I get the best marks in

New subjects I'm interested in studying in the future

What career do I want to do after I leave school

What subjects do I need to take for my future career choice

